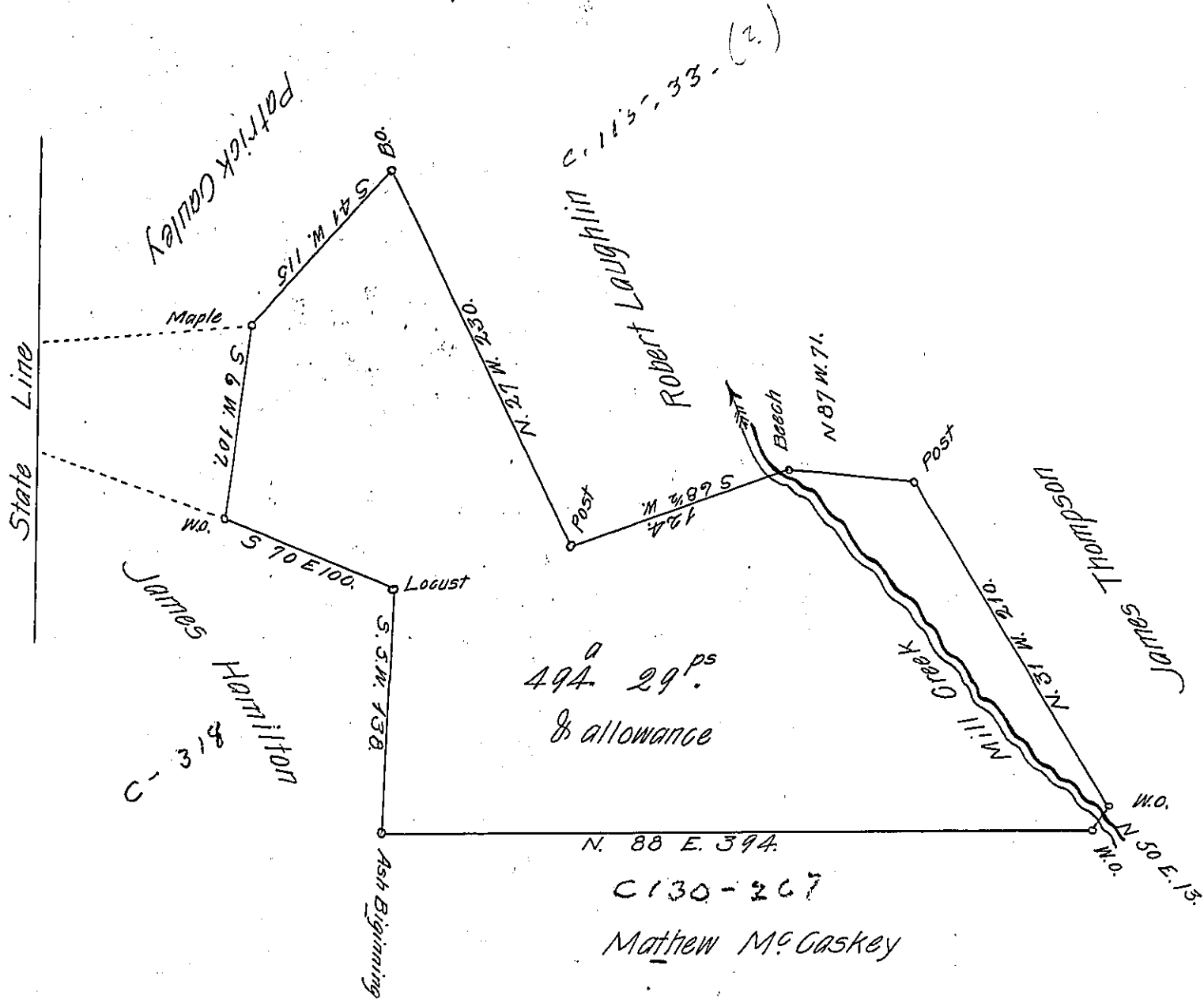


Y-153



The Above is a Draft of a Tract of Land Surveyed March 27th 1817. in pursuance of a Warrant granted to Alexander Laughlin dated November the first 1787, Situate on the waters of Mill Creek. formerly Washington (now Beaver County) Containing 494 Acres 29 perches and allowance & c.

I, Hugh McCullough D.S. do Certify that there was an Actual resident Settlement on the Ground at the time of Survey

Hugh McCullough D.S.

To Rich<sup>d</sup>. J. Leech Esq<sup>r</sup> }  
Surveyor General

IN TESTIMONY that the above is a copy of the original remaining on file in the Department of Internal Affairs of Pennsylvania, made conformably to an Act of Assembly approved the 16th day of February, 1833, I have hereunto set my Hand and caused the Seal of said Department to be affixed at Harrisburg, this twentyeighth day of August 1905.

*Isaac R. Brown*  
Secretary of Internal Affairs